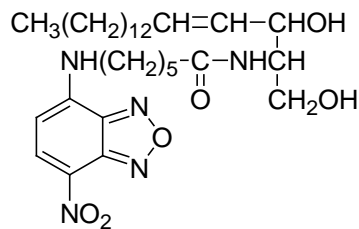


## PRODUCT AND SAFETY DATA SHEET

**PRODUCT NAME:** NBD C6-Ceramide**CATALOG #:** 60030**MOLECULAR INFORMATION:** C<sub>30</sub>H<sub>49</sub>N<sub>5</sub>O<sub>6</sub>  
Mwt: 575.74**PROPERTIES:**

<b>Color &amp; Form</b>	Yellow solid
<b>Purity</b>	≥ 95% by TLC
<b>Solubility</b>	Soluble in chloroform or DMSO
$\lambda_{\text{ex}} \backslash \lambda_{\text{em}}$	466 nm (MeOH)
<b>Extinction Coefficient</b>	20,000 ± 3,000

**STORAGE AND HANDLING:** Store at ≤ -20°C and protect from light.**APPLICATION:** NBD C6-ceramide has been used for following sphingolipid metabolism in cells.Ref.: 1) *Methods Cell Biol.* **38**, 221 (1993); 2) *Biochim Biophys Acta* **1113**, 277 (1992); 3) *Adv. Cell Mol. Biol. Membranes* **1**, 199 (1993); 4) *Biochim Biophys Acta* **1082**, 113 (1991).**TOXICITY:** Unknown.

<b>FIRST AID:</b>	Potentially harmful. Avoid prolonged or repeated exposure. Avoid getting in eyes, on skin, or on clothing. Wash thoroughly after handling. If eye or skin contact occurs, wash affected areas with plenty of water for 15 minutes and seek medical advice. In case of inhaling or swallowing, move individual to fresh air and seek medical advice immediately.
-------------------	---

<b>Disclaimer:</b> <i>Materials from Biotium are sold for research use only, and are not intended for food, drug, household, or cosmetic use. Biotium is not liable for any damage resulting from handling or contact with this product.</i>
--