

# Primary Antibodies

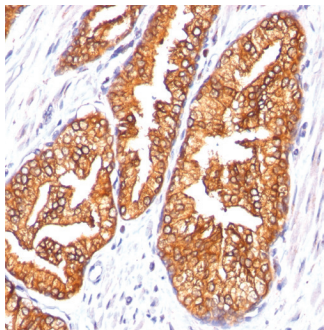
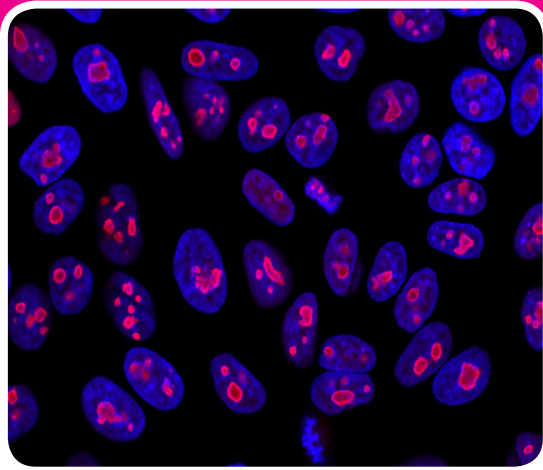


Figure 1. IHC staining of human prostate carcinoma with anti-ODC1 clone ODC1/485.

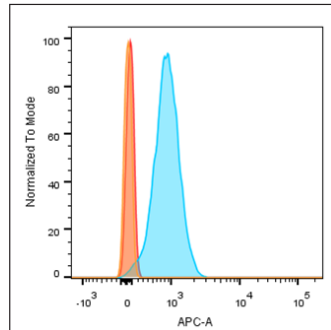


Figure 2. Flow cytometry analysis of U937 cells with anti-CD31/PECAM clone C31.7, CF647 conjugate (blue) or isotype control (orange).

## Your choice of size and format

Format	Concentration	Size
CF® dye conjugates (13 colors)	0.1 mg/mL	100 or 500 uL
Biotin, HRP or AP conjugates	0.1 mg/mL	100 or 500 uL
R-PE, APC, or Per-CP conjugates	0.1 mg/mL	250 uL
Purified, with BSA	0.1 mg/mL	100 or 500 uL
Purified, BSA-free (Mix-n-Stain™ Ready)	1 mg/mL	50 uL

## Advantages

- More than 1000 monoclonal antibodies
- Growing selection of monoclonal rabbit antibodies
- Validated in IHC and other applications
- Choose from 13 bright and stable CF® dyes
- Also available with R-PE, APC, PerCP, HRP, AP, or biotin
- Purified antibodies available BSA-free, 1 mg/mL, ready to use for Mix-n-Stain™ labeling or other conjugation
- Offered in affordable 100 uL size

## Unique accessory products

- EverBrite™ Mounting Medium to protect samples from photobleaching: wetset and hardset options, with and without DAPI
- CoverGrip™ coverslip sealant: replaces nail polish for coverslip sealing and won't leach into your sample
- TrueBlack™ Lipofuscin Autofluorescence Quencher: Less background than Sudan Black B
- RedDot™2 Far-Red Nuclear Counterstain: For the Cy@5 channel, more specific than DRAQ7™

## Your choice of 13 bright and photostable CF® dyes

CF® dye	Ex/Em (nm)	Features
CF®405S	404/431	• Better fit for the 450/50 flow cytometer channel than Alexa Fluor® 405
CF®405M	408/452	• More photostable than Pacific Blue®, with less green spill-over • Compatible with super-resolution imaging by SIM
CF®488A	490/515	• Less non-specific binding and spill-over than Alexa Fluor® 488 • Very photostable and pH-insensitive • Compatible with super-resolution imaging by TIRF
CF®543	541/560	• Brighter than Alexa Fluor® 546
CF®555	555/565	• Brighter than Cy@3 • Validated in multicolor super-resolution imaging by STORM
CF®568	562/583	• Optimized for the 568 nm line of the Ar-Kr mixed-gas • Brighter and more photostable than Alexa Fluor 568 • Compatible with TIRF and multicolor STORM
CF®594	593/614	• Brighter than Texas Red® or Alexa Fluor® 594 • Extremely photostable
CF®640R	642/662	• Most photostable Cy@5-like dye with excellent brightness • Compatible with TIRF and FLIMP super-resolution techniques
CF®647	650/665	• Brighter than Cy@5 • Compatible with super-resolution imaging by STORM
CF®660R	663/682	• Brighter than Alexa Fluor® 660, remarkably photostable
CF®680	681/698	• Brighter than Cy@5.5, Alexa Fluor® 680, or IRDye® 680LT • Validated in STORM and 3D super-resolution imaging • Compatible with LI-COR® Odyssey® System
CF®680R	680/701	• The most photostable 680 excitable dye • Compatible with LI-COR® Odyssey System
CF®770	770/797	• Exceptionally bright and stable • Compatible with LI-COR® Odyssey® System • Replacement for DyLight® 800 or IRDye® 800CW

## Choose fluorescent or biotin conjugates, enzyme-linked, purified or BSA-free

<b>A</b>	CD209 / DC-SIGN	CELA3B	Glucose Regulated Protein 94	MCM7	Prostate Specific Antigen
A, Forssman	CD21	CFTR	Glycophorin A / CD235a	Melanoma Marker	Prostate specific acid phosphatase
Alpha Anti Chymotrypsin	CD22 / BL-CAM	Chromogranin A	Glypican-3	Melanosome / gp100	Protocadherin FAT2
Alpha Anti Trypsin	CD25	Clathrin, heavy chain	GM-CSF	Milk Fat Globulin	Proximal Nephrogenic Antigen
ACTH	CD257	Clathrin, light chain	GnRH-Receptor	MiTF	pS2
Adenosine Monophosphate Deaminase 3	CD26	CMV-p65	Golgi Complex	Mitochondrial Marker	PTH / Parathyroid Hormone
Adiponectin	CD27	Complement C4d	GP2 / ZAP75	MMP2 / Collagenase	<b>R</b>
Adipophilin	CD28	Connexin 32	Granulocyte Marker	Moesin	Rabies
AFP	CD282 / TLR2	Creatine	GCSF	MRP-1	Rb1
ALDH1A1	CD284 / TLR4	Phosphokinase	Growth Hormone	MRP-14	Retinol Binding Protein-1
ALK / CD246	CD30	Cyclin A2	<b>H</b>	MRSA	<b>S</b>
Alkaline Phosphatase	CD31 / PECAM-1	Cyclin B1	HCG-alpha	MUC2	S100
AMACR / p504S	CD32	Cyclin D1	HCG-beta	MUC5AC	S100A4
Androgen Receptor	CD325 / N-cadherin	Cytochrome C	HCG-intact	Mucin 1 / EMA / Episialin / CD227	S100A9
ASRGL1	CD326 / EpCAM	Cytokeratin 10	Helicobacter pylori	Mucin 3	S100B
ATRX / RAD54	CD33	Cytokeratin 10/13	Heparan Sulphate Proteoglycan	Mucin 5AC	SHBG
Aurora B	CD34	Cytokeratin 14	Hepatocyte Specific Antigen	Mucin 6	Small Cell Lung Cancer
<b>B</b>	CD340 / HER-2	Cytokeratin 15	HIF1	Muscle Specific Actin	Smooth Muscle Actin
Bax	CD35 / CR1	Cytokeratin 17	Histiocytoma Marker	Myeloid-Associated	SOX2
BCL-10	CD36	Cytokeratin 18	Histone H1	Differentiation Marker	SOX10
bcl-2	CD37	Cytokeratin 19	HLA-A	MyoD1	Spectrin beta III
bcl-6	CD38	Cytokeratin 5/8	HLA-Aw32 & HLA-A25	Myogenin	SUMO-1
bcl-x	CD3e	Cytokeratin 6	HLA-B	Myosin, Smooth Muscle Heavy Chain	SUMO-2
Beta Catenin	CD4	Cytokeratin 7	HLA-DRA	<b>N</b>	SUMO-2/3
Beta-2 Microglobulin	CD40	Cytokeratin 8	HLA-DRB	Napsin-A	<b>T</b>
Biotin	CD41a	Cytokeratin 8/18	HLA-DP	NDRG1	TAG-72 / CA72.4
Blood Group A	CD43	Cytokeratin, Acidic	HLA-DQ	Neurofilament, light	TDP2 / EAP2
Blood Group B	CD44 Standard	Cytokeratin, Basic	HSP27	Neurofilament, heavy	Tenascin
Blood Group H Type 2	CD44v4	Cytokeratin, HMW	HSP60	NGFR	Testosterone
Bovine Serum Albumin	CD44v6	Cytokeratin, LMW	Human Leukemia Antigen	NKX2.2	TGFalpha
BRCA1	CD44v9	Cytokeratin, multi	Human Nuclear Antigen	NSE gamma	TGF-beta
BrdU	CD45 / LCA	Cytokeratin, pan	Human Papillomavirus 16	Nuclear Membrane	Thymidine phosphorylase
<b>C</b>	CD45RA	<b>D</b>	<b>I</b>	Nucleolar / Nucleoli	Thymidylate Synthase
c-Myb	CD45RB	Desmin	IDH1	Nucleolin	Thyroglobulin
c-Myc	CD45RO	Desmocollin-2,3	IgA Immunoglobulin	Nox4	TIA1
CA19-9	CD46	Desmoglein-1	IgA Secretory Component	NuMA	TIMP2
Caldesmon, HMW	CD47	Desmoglein-2	IGF-1	<b>O</b>	TNF alpha
Calgranulin B	CD48	Desmoglein-3	IgG4	ODC-1	Topoisomerase I, MT
Calnexin	CD5	DOG-1	IgG Immunoglobulin	<b>P</b>	Topoisomerase II alpha
Calponin-1	CD50	Double Stranded DNA	IgM Immunoglobulin	p21 / WAF1	TOX3
Calprotectin	CD53	<b>E</b>	IL-6	p24-HIV	TRAcP
Campylobacter jejuni	CD54 / ICAM-1	E-Cadherin / CD324	Insulin	p27 / KIP1	Transgelin / SM22-alpha
Carbonic Anhydrase IX	CD55	E. coli O157	Interferon alpha 1	p34 / cdk1	Transglutaminase II
CD1a	CD56 / NCAM	EGFR	Interferon alpha-2	p40	TRIM29
CD10	CD57 / B3GAT1	EMI1	Interferon gamma	p53	TRP1
CD100	CD59	Eosinophil Peroxidase	Involucrin	p55;50 EBV-Early Antigen	TSH receptor, A chain
CD104	CD6	<b>Erythrocyte Specific</b>	IPO-38	p57 / KIP2	TSH receptor, B chain
CD105 / Endoglin	CD61	Erythropoietin	<b>K</b>	p63	TTF-1 / NKX2.1
CD106 / VCAM1	CD63	Estrogen Receptor	Kappa Light Chain	P-cadherin	Tyrosinase
CD117	CD66	Estrogen Receptor beta 1	Ksp-Cadherin / CDH16	Parathyroid hormone	Tyrosinase-related protein
CD11a	CD68	ETS1	Ku-Holo	PAX6	<b>U</b>
CD11b	CD7	<b>F</b>	<b>L</b>	PAX7	UACA / Nucling
CD11c	CD70	Factor XIIIa	LAIR 1	PAX8	UGT1A9
CD13	CD71	Fascin-1	Lambda Light Chain	PCNA	<b>V</b>
CD14	CD74	Ferritin, light chain	Laminin	PD1 / PDCD1 / CD279	VEGF-A
CD14	CD79a	FGF23	LEC Chemokine	pgp9.5	VEGFR1 / Fit-1
CD15	CD8	Fibronectin	Lewis A	Phosphotyrosine	VEGFR2 / Flk-1
CD141 / thrombomodulin	CD80	Filaggrin	Lewis B	Plakophilin-1	VEGI
CD146 / Mucin 18 / MCAM	CD81	FITC	Lewis Y	PLAP	Villin
CD147	CD84	FLI1	Liver Canaliculi	Plasma Cell Marker	Vimentin
CD15 / FUT4 / Lewis x	CD86	FOXA1	LHCGR	PLGF	VLDL receptor
CD16 / Fc-gamma Receptor III	CD8A	FOXP3	Lung Specific Antigen	Pmel17 / gp100 / SILV	von Willebrand Factor
CD171 / L1CAM	CD90 / Thy1	FSH beta	Luteinizing Hormone beta	Podocalyxin	<b>W</b>
CD176 / T-F Ag	CD95	FSR receptor	<b>M</b>	Podoplanin	WT1
CD18	CD98	<b>G</b>	Macrophage Specific Antigen	Progesterone	<b>Z</b>
CD19	CD99	Galectin-1	MAGE A1	Progesterone Receptor	ZAP70
CD195 / CCR-5	Cdc20	Galectin-13	Major Vault Protein	Prolactin Receptor	
CD1a	CDw17	Gamma catenin	MALT-1		
CD1b	CDw60	GCDFP-15	MAML2		
CD2	CDw75	GFAP	MAML3		
CD20	CDX2	GLG1	MART-1 / Melan-A		

Biotium offers a large collection of monoclonal antibodies, with over 1000 different clones (multiple clones are available for many targets). Our collection is always growing. Visit [www.biotium.com](http://www.biotium.com) to see our current offerings.

[www.biotium.com](http://www.biotium.com)  
 General Inquiries: [order@biotium.com](mailto:order@biotium.com)  
 Technical Support: [techsupport@biotium.com](mailto:techsupport@biotium.com)  
 Phone: 800-304-5357

