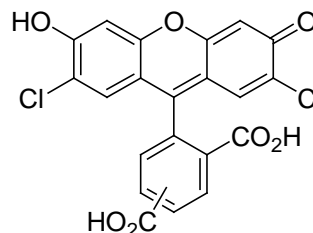


PRODUCT AND SAFETY DATA SHEET

PRODUCT NAME: 5-(and-6)-Carboxy-2', 7'-dichlorofluorescein (mixed isomer)**CATALOG #:** 51015**MOLECULAR INFORMATION:** C₂₁H₁₀Cl₂O₇
Mwt: 445**PROPERTIES:**

Color & Form	Yellow solid
Purity	≥ 98% by TLC
Solubility	Soluble in DMSO, DMF or basic water (pH >7)
$\lambda_{ex} \backslash \lambda_{em}$	504/529nm (pH8)
Extinction Coefficient (ϵ)	90,000

STORAGE AND HANDLING:

Store at room temperature and protect from light

APPLICATION:5-(and-6)-Carboxy-2', 7'-dichlorofluorescein is similar to carboxyfluorescein (**51013**) but has lower pK_a (pK_a = 4.8). It is useful for detecting pH in more acidic environment. Also see **51016**.Ref.: 1) Bramhall, J., et al. *Biochemistry* **26**, 6330(1987); 2) Knight, C.G., et al. *Biochim. Biophys. Acta* **985**, 75(1989); 3) Nedergaard, M. et al. *Anal. Biochem.* **187**, 109(1990).**TOXICITY:**

Unknown

FIRST AID:

Potentially harmful. Avoid prolonged or repeated exposure. Avoid getting in eyes, on skin, or on clothing. Wash thoroughly after handling. If eye or skin contact occurs, wash affected areas with plenty of water for 15 minutes and seek medical advice. In case of inhaling or swallowing, move individual to fresh air and seek medical advice immediately.

Disclaimer: Materials from Biotium are sold for research use only, and are not intended for food, drug, household, or cosmetic use. Biotium is not liable for any damage resulting from handling or contact with this product.