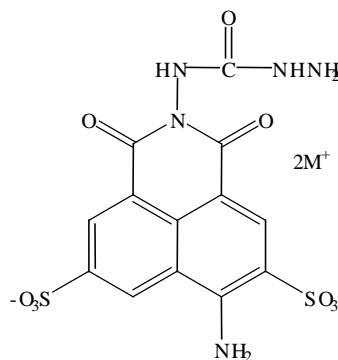


PRODUCT AND SAFETY DATA SHEET

PRODUCT NAME: Lucifer Yellow CH lithium salt**CATALOG #** 80015**MOLECULAR INFORMATION:** C₁₄H₁₀Li₂N₅O₉
S₂
MWt: 45780015 M = Li⁺
80016 M = K⁺**PROPERTIES:**

Color & Form	Light yellow solid
Purity	≥ 99% by HPLC
Solubility	Soluble in water
Absorption/Emission	428/536 nm
Extinction Coefficient	12,000

STORAGE AND HANDLING: Stored desiccated at ≤ 4 °C and protect from light, especially when in solution.**APPLICATION:** Lucifer Yellow CH lithium salt (LY CH lithium salt) is a widely used polar molecular tracer for studying neuronal morphology. The fluorescent molecule contains a carbohydrazide that allow the molecule to be fixable with an aldehyde fixation agent.Ref.: 1) *Nature* **292**, 17(1981); 2) *Cell* **14**, 741(1978).**TOXICITY:** Unknown

FIRST AID:	Potentially harmful. Avoid prolonged or repeated exposure. Avoid getting in eyes, on skin, or on clothing. Wash thoroughly after handling. If eye or skin contact occurs, wash affected areas with plenty of water for 15 minutes and seek medical advice. In case of inhaling or swallowing, move individual to fresh air and seek medical advice immediately.
-------------------	---

Disclaimer: <i>Materials from Biotium are sold for research use only, and are not intended for food, drug, household, or cosmetic use. Biotium is not liable for any damage resulting from handling or contact with this product.</i>
--