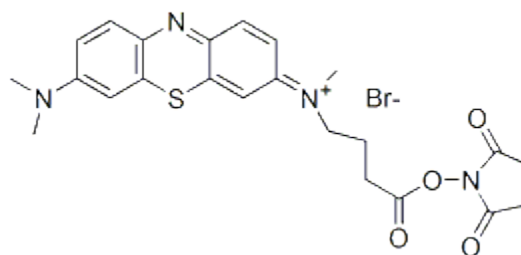


PRODUCT AND SAFETY DATA SHEET

PRODUCT NAME: MB Succinimidyl ester

CATALOG # 40075

MOLECULAR INFORMATION: C₂₄H₂₆BrN₄O₄S
MWt: 533



PROPERTIES:

Color & Form	Blue solid
Solubility	Soluble in DMSO or DMF
Absorption	668 nm
Extinction Coefficient	70,000

STORAGE AND HANDLING:

Stored desiccated at -20°C and protect from light, especially when in solution.

APPLICATION:

The amine reactive succinimidyl ester of MB (methylene blue) can be conjugated to peptides, proteins, drugs, polymeric materials and biomolecules with primary amine groups. The blue color conjugates can complex with nucleic acids. Methylene blue is a well known redox dye which can be reversibly reduced to its colorless leuco form. Upon oxidation, the blue color of the dye is recovered.

TOXICITY:

Unknown

FIRST AID:

Potentially harmful. Avoid prolonged or repeated exposure. Avoid getting in eyes, on skin, or on clothing. Wash thoroughly after handling. If eye or skin contact occurs, wash affected areas with plenty of water for 15 minutes and seek medical advice. In case of inhaling or swallowing, move individual to fresh air and seek medical advice immediately.

Disclaimer: Materials from Biotium are sold for research use only, and are not intended for food, drug, household, or cosmetic use. Biotium is not liable for any damage resulting from handling or contact with this product.